



Cappa chimica

- Cod. **KNI 30120** mm 1260 x980x2300h
- Cod. **KNI 30150** mm 1560 x980x2300h
- Cod. **KNI 30180** mm 1860 x980x2300h



Cappa chimica distillazione

- Cod. **KDI 30121** mm 1260 x980x2300h
- Cod. **KDI30151** mm 1560 x980x2300h
- Cod. **KDI 30181** mm 1860 x980x2300h



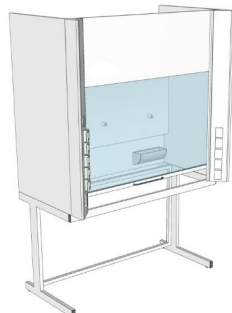
Cappa chimica walk-in

- Cod. **KWI 30120** mm 1180 x1070x2500h
- Cod. **KWI 30150** mm 1480 x1070x2500h
- Cod. **KWI 30180** mm 1780 x1070x2500h



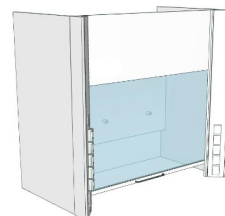
Cappa chimica acidi forti

- Cod. **KNA 30120** mm 1260 x980x2300h
- Cod. **KNA 30150** mm 1560 x980x2300h
- Cod. **KNA 30180** mm 1860 x980x2300h



Cappa chimica da banco

- Cod. **KNB 30120** mm 1200 x887x1400h
- Cod. **KNB 30150** mm 1500 x887x1400h
- Cod. **KNB 30180** mm 1800 x887x1400h



- Cod. **KNA 30120** mm 1260 x980x2300h
- Cod. **KNA 30150** mm 1560 x980x2300h
- Cod. **KNA 30180** mm 1860 x980x2300h

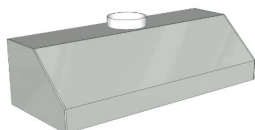


- Cod. **MCM 0001** mm 1200 x470x780h
- Cod. **MCM 0019** mm 900 x470x780h



- Cod. **MCM 0002** mm 1200 x470x780h
- Cod. **MCM 0029** mm 900 x470x780h

- Cod. **MCM 0003** mm 1200 x470x780h
- Cod. **MCM 0039** mm 900x470x780h



- Cod. **KNP 30120** mm 600 x470x780h



- Cod. **MCM 0012** mm 600 x470x780h